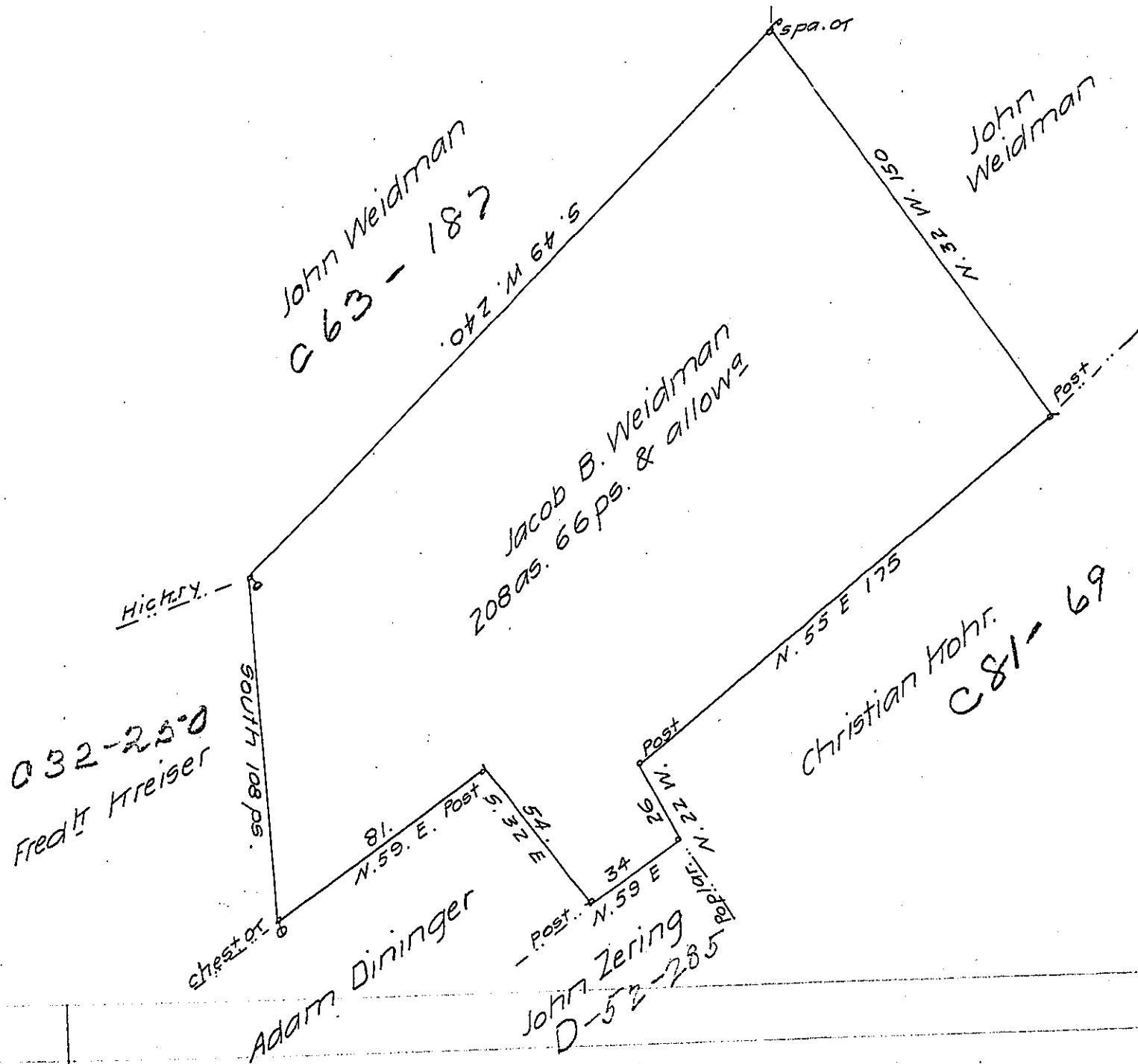


FORM NO. 1.



Situate in East Hanover township Lebanon County Surveyed
 the 20th day of January 1820. In pursuance of a Warrant granted
 to Jacob B. Weidman of the 21st Decr 1816. Containing two hun-
 dred & eight acres & sixty six perches & allow^d as appears by the
 official draft of Thomas Smith late Deputy Surveyor & remaining
 in my office

Levi G. Hollingsworth D.S.

Saml Cochran Esqr.
 Surveyor Genl.

IN TESTIMONY that the above is a copy of the original remaining on file in
 the Department of Internal Affairs of Pennsylvania, made
 conformably to an Act of Assembly approved the 16th day of
 February 1833, I have hereunto set my hand and caused
 the Seal of said Department to be affixed at Harrisburg,
 this fifteenth day of September 1907

Henry Howell
 Secretary of Internal Affairs.